



# Linhay Hill Quarry Local Liaison Group

Meeting 2

15 September 2022



# Update since the last LLG meeting - 25 January 2022

## 1. Conditions discharge and other consents

**All pre-commencement conditions** discharged as reported at the last meeting, but some have been updated as we progress through the detailed design for the various elements in Stage 0 : Construction Environmental Management Plan, Method of Construction Statements, and Arboricultural Method Statement.

LEMES amendment pending

## 2 Non Material Amendments – Alston Farm Access and Alston Ponds

### Other Consents

The Dormouse Licence was approved 11 February – work on Waye Lane commenced 14 February!

9 DCC Land Drainage Consents

3 EA Flood Risk Activity Permits

Stopping Up of Alston Lane – Decision 17 February

Temporary Footpath Diversions – Decisions 21 February and 5 May. Application for Time extension approved 11 August

Service Diversions – WPD, SWW, BT – all pending





# Alterations to SDCC Turning Circle - completed







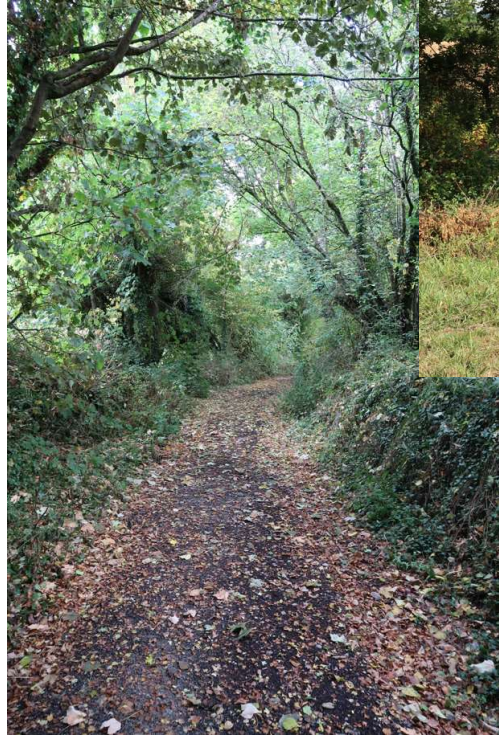
# Vegetation Clearance along Balland Lane - Stage 1 completed







# Temporary Footpath route - Completed







# Footpath diversions in place







## New Permanent Footpath route – in progress







# Drainage works along Waye Lane – Preparations made







# Alston Ponds – in progress







## Alston Farm Access – nearing completion





# Alston Farm Access – hedge relocation 1



Plate 6: Donor hedge being loosened prior to translocation



Plate 8: Large section of hedge being translocated by tined loader



Plate 7: Small section of hedge being translocated via excavator



Plate 11: Watering translocated hedge during dry weather





## Hedge relocation 2 –

Before dressing, immediately after, and re-growth in June



Plate 9: Translocated hedge prior to dressing



Plate 10: Translocated hedge immediately after completion



Plate 12: Hedge re-growth in June



## **3. Environmental Steering Group**

Meeting held 13 July

### **Karst Liaison Network**

E&JW Glendinning Ltd Website updated with Karst Logging Page  
Baseline Building Surveys - pending

**Also:**

**Shrimp Research**

**TRO Application**

**Signage Strategy with DCC**

**Consultation with ATC re Walled Garden**

**Ongoing water monitoring**

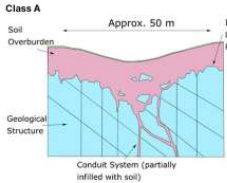




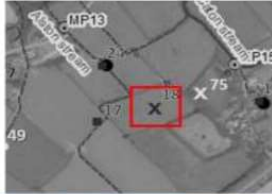
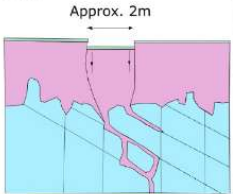
Project-specific Sinkhole Classification

Each sinkhole is assigned to a class based on its size, depth, and the geological conditions it is situated in. The classification is based on the following criteria:

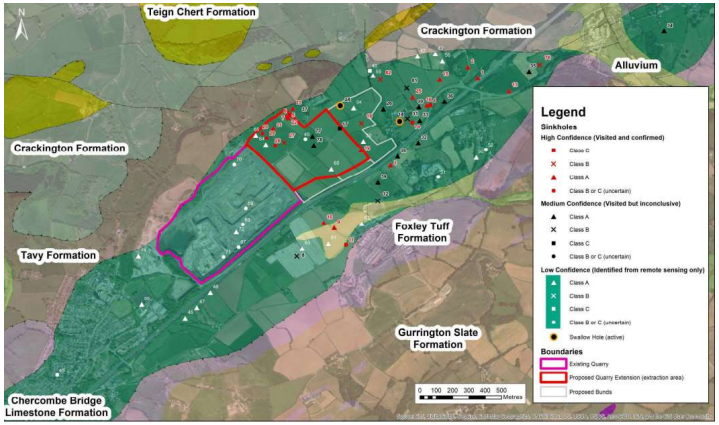
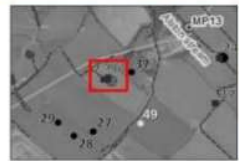
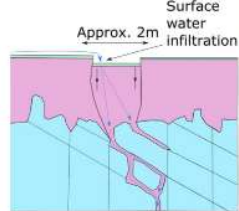
- Class A: Large sinkholes with a diameter of approximately 50m or more, often associated with a conduit system.
- Class B: Medium-sized sinkholes with a diameter of approximately 2m to 50m.
- Class C: Small sinkholes with a diameter of approximately 2m or less, often associated with surface water infiltration.



Class B



Class C



# Karst Logging Tool

Click anywhere on the map to begin logging a notification in that location.

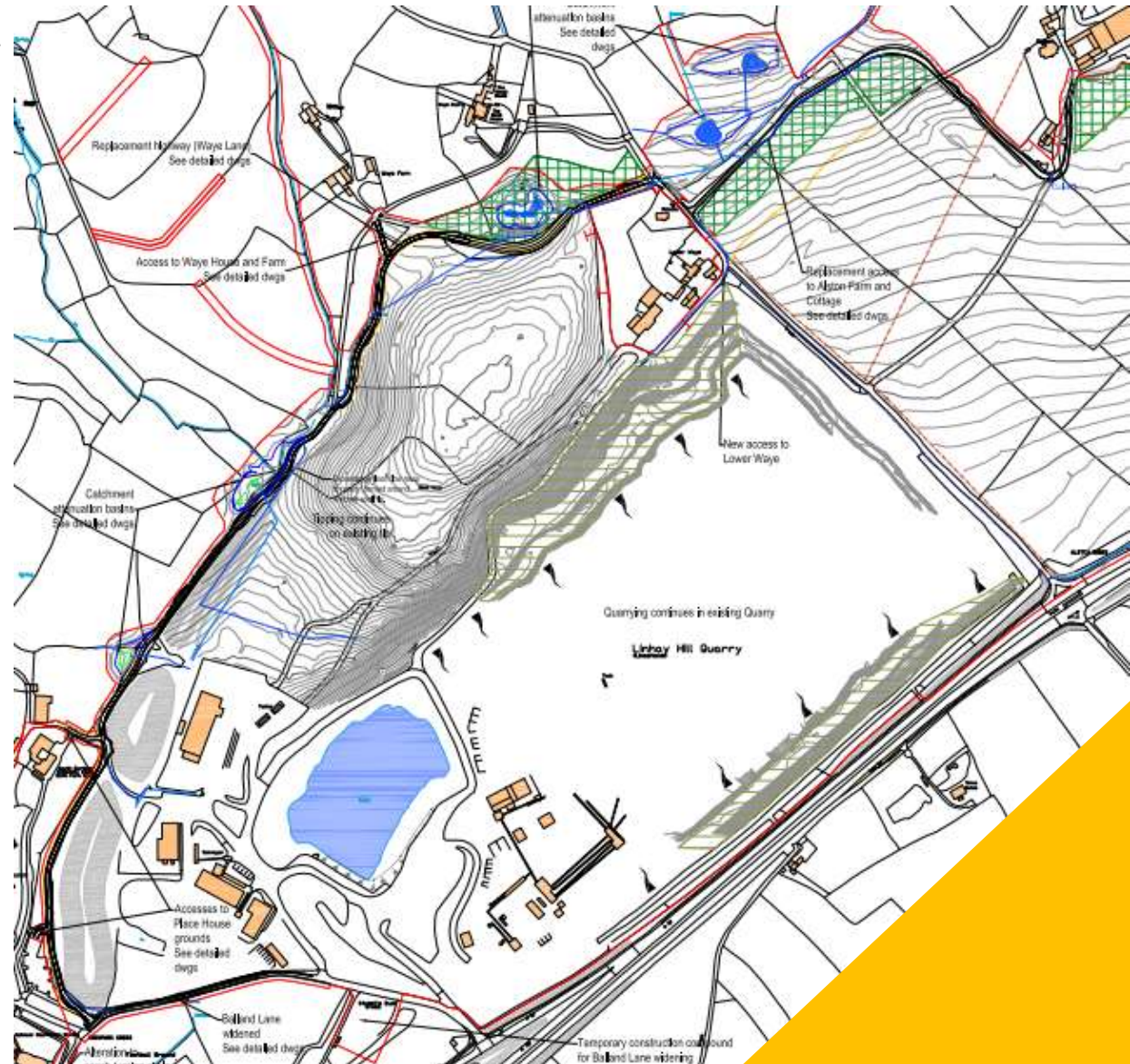


© 2023 Glendinning. All rights reserved. This document is the property of Glendinning and is intended for use only by those authorized to use it. No part of this document may be reproduced, stored in a retrieval system, or transmitted in any form or by any means, electronic, mechanical, photocopying, recording, or by any information storage and retrieval system, without the prior written permission of Glendinning. The information contained herein is confidential and intended for the use of the individual user only. It is not to be distributed, copied, or otherwise used for any other purpose without the prior written permission of Glendinning.



## 4. Outline of Proposed Project Programme

- Complete drainage works along Waye Lane – aim to complete end 2022
- Complete Alston Farm Access – by early 2023
- Stump removal on Balland Lane – imminent
- Progressing S278 design and Agreement for Waye Lane and Balland Lane with DCC – construction starts 2023 – Barry will meet individual neighbours to update
- WPD diversion - ongoing
- SWW diversion - 2023
- Landscape planting to commence – woodland and grassland – autumn/winter 2022
- Liaising w NH re Caton Cross – aim to start Spring 2023







**5. Future Local Liaison Group arrangements**

**6. AOB**

**7. Date and venue/format for next meeting**